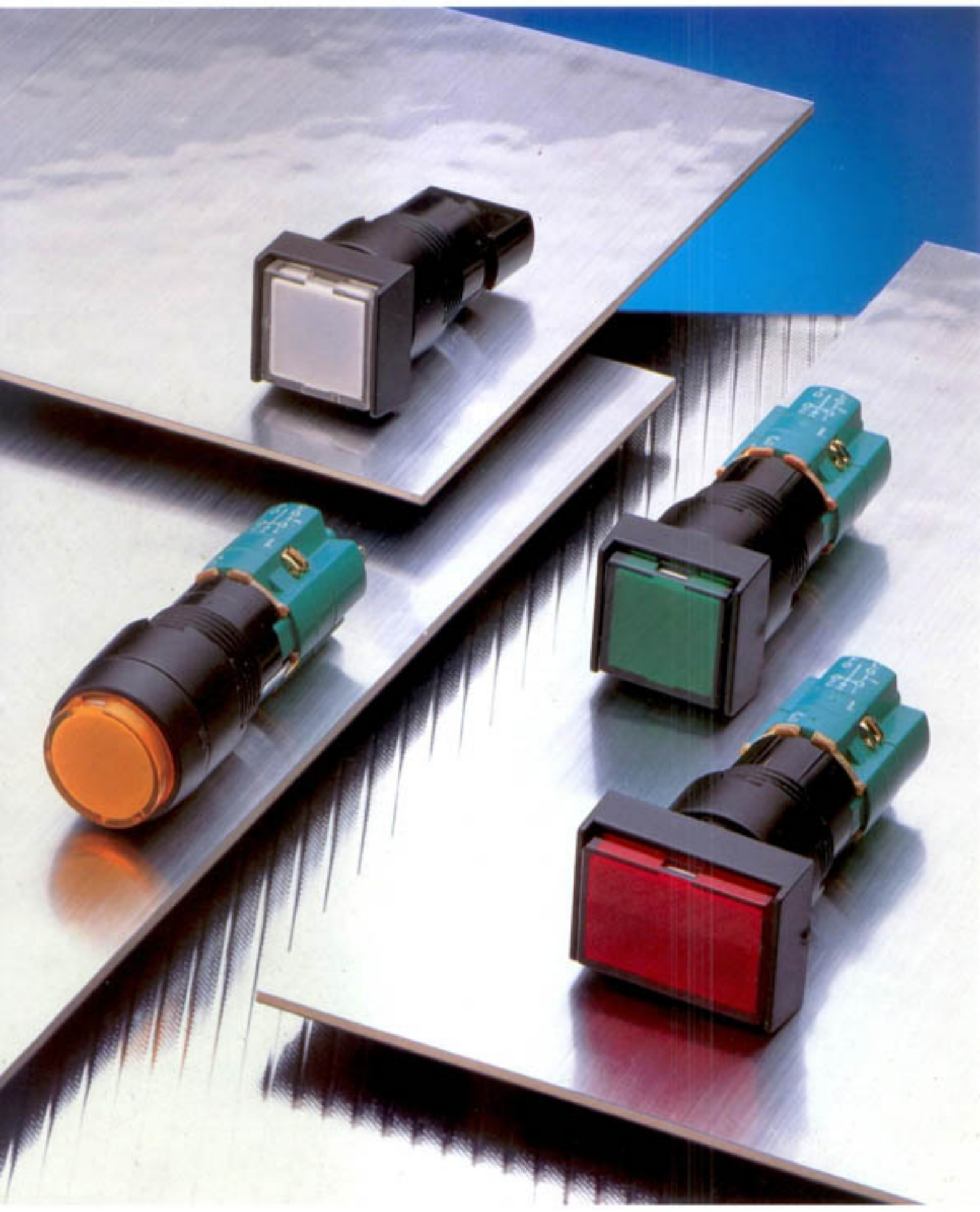




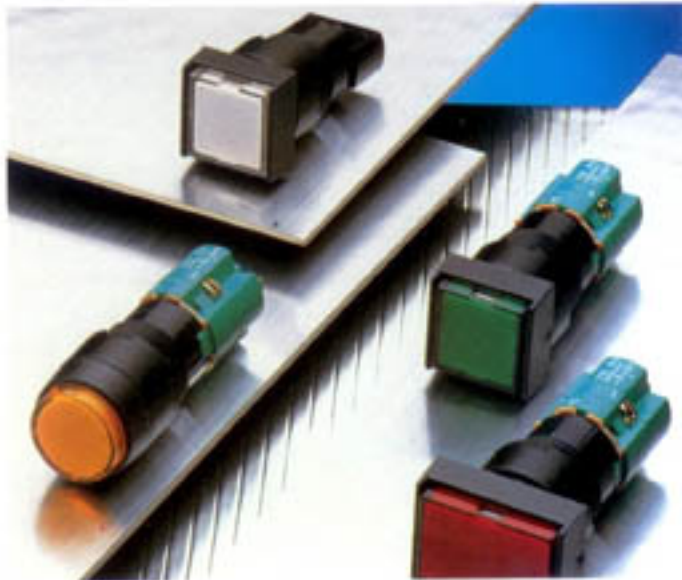
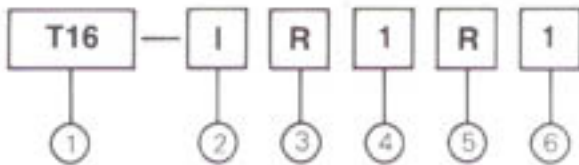
TEND

φ 16M/M ILLUMINATED
PUSH BUTTON SWITCHES



$\varnothing 16$ m/m ILLUMINATED PUSH BUTTON SWITCHES

MODEL DESIGNATION

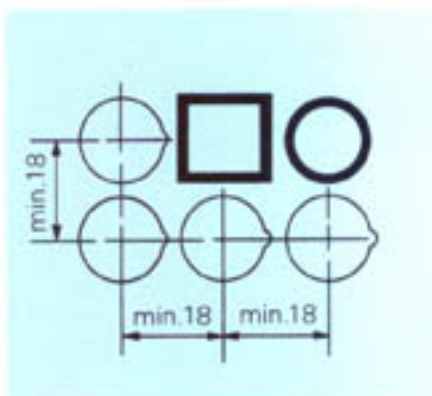


CHARACTERISTICS

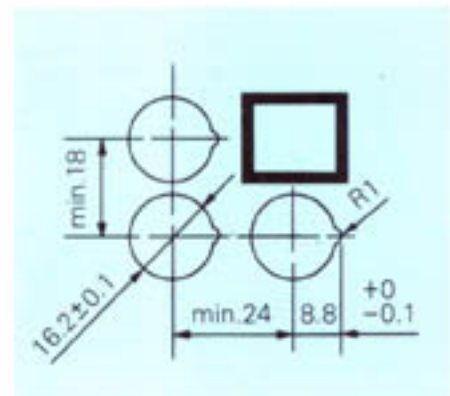
Contact resistance	15m Ω max.
Insulation resistance	100m Ω min. (at 500 VDC)
Dielectric strength	1500VAC, 50/60 HZ for 1minute
Ambient temperature	operating: -20°C~80°C
Humidity	95% RH max.
Operation force	150 g
Service life	Mechanically: 1,000,000 operations min. Electrically: 100,000 operations min.
weight	10 gr (1a1b) 15gr (4a4b)

PANEL MOUNTING

(R,S TYPE)



(L TYPE)



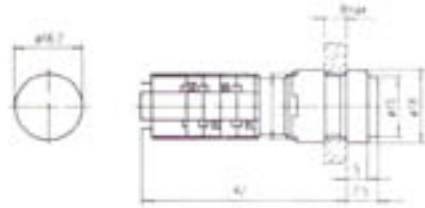
Designation	Signal	Description
1. Mounting Hole	T16	16mm Series
2. Type	I B P G S	Illuminated Push Button (Alternate) Illuminated Push Button (Momentary) Pilot Lamp Switch Guard Sealing Cap
3. Shape	R S L	Round Square Rectangular
4. Voltage	1 2 5 6 7 8 9	110V AC 220V AC 6V 18V 24V 28V 12V
5. Lens Color	R G O W B	Red Green Orange White Blue
6. Contact Blocks	1 2 3 4	1a1b (1 No 1NC) 2a2b (2 No 2NC) 3a3b (3 No 3NC) 4a4b (4 No 4NC)

RATING

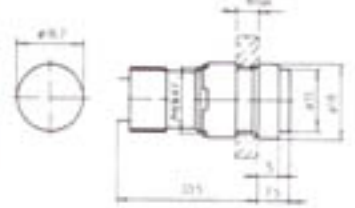
Rated Voltage	Resistive Load	Inductive Load	Contact	Length
125V AC	4A	3A	1a1b	41.5mm
250V AC	4A	3A	2a2b	49.5mm
24V DC	1A	0.7A	3a3b	57.5mm
12V DC	0.2A	0.05A	4a4b	65.5mm

$\varnothing 16$ m/m ILLUMINATED PUSH BUTTON SWITCHES

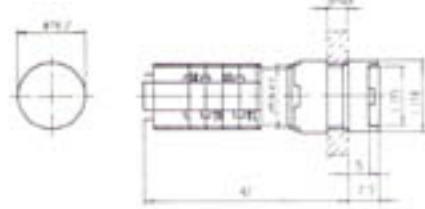
T16-IR(Alternate)
T16-BR(Momentary)



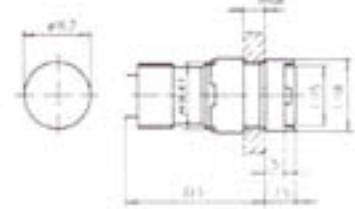
T16-PR



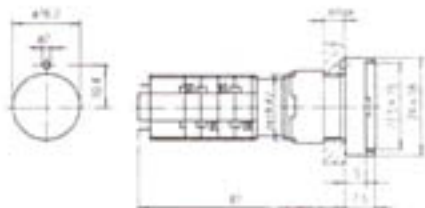
T16-IS(Alternate)
T16-BS(Momentary)



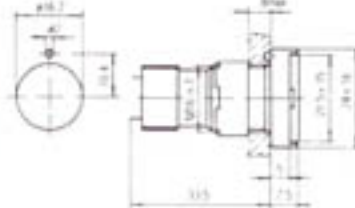
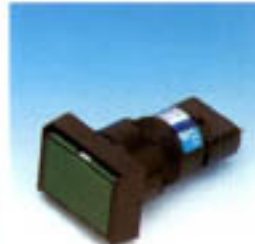
T16-PS



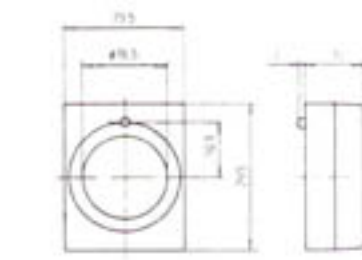
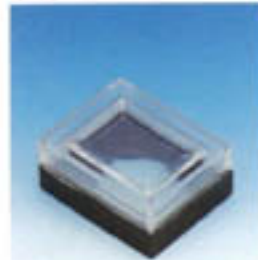
T16-IL(Alternate)
T16-BL(Momentary)



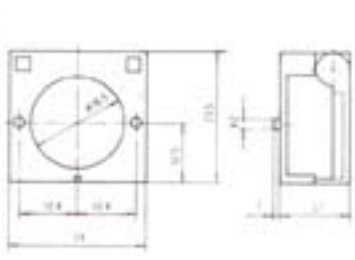
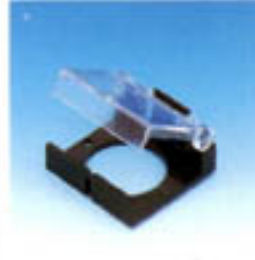
T16-PL



T16-WL



T16-GL



● MINIATURE TELEPHONE BULB

T-4.5

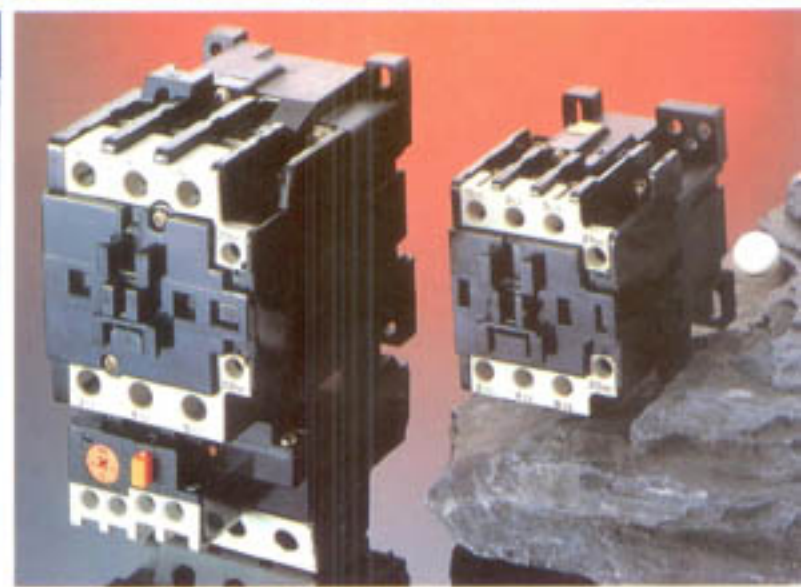
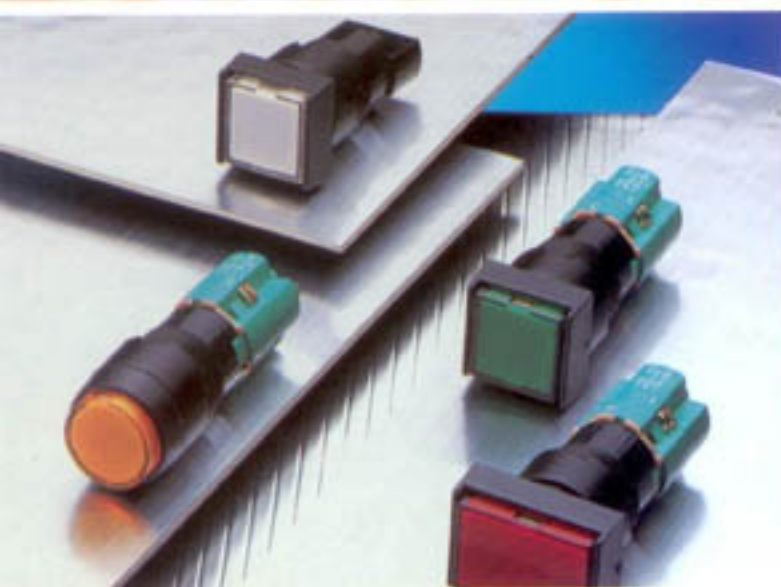
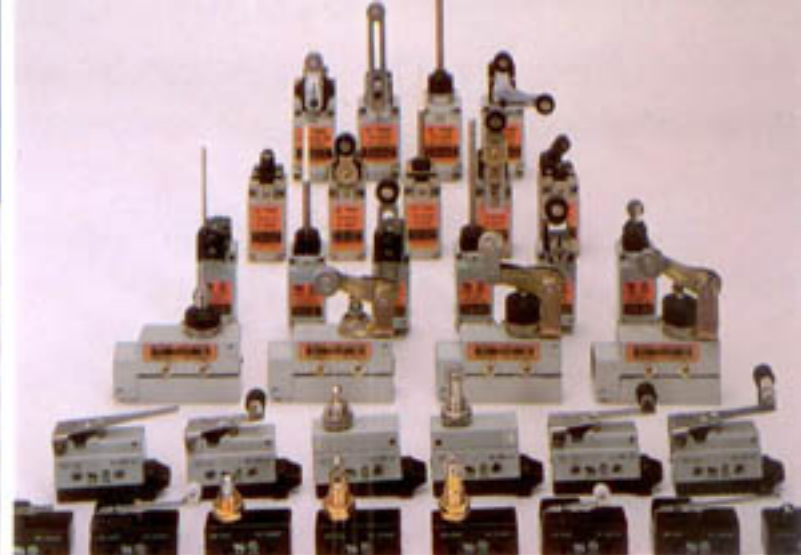


Voltage	Wattage	Diameter	Length
v	w	mm	mm
6	0.3	4.2±0.2	16.5 ^{+0.5} ₋₁
12	0.5		
18	0.5		
24	0.5		
28	0.7		
110V	0.3		
220V	0.3		

● Tightening tool for fixing lamp

T16-A





Vertrieb für die Schweiz:

ELECTRO ED DYNAMICS

Fluhweg 2, CH-4324 Obermumpf, www.electrodynamics.ch
Tel: +41 62 873 50 05, FAX: +41 62 873 50 06; info@electrodynamics.ch



TEND

REAL TEND ELECTRIC CO., LTD.